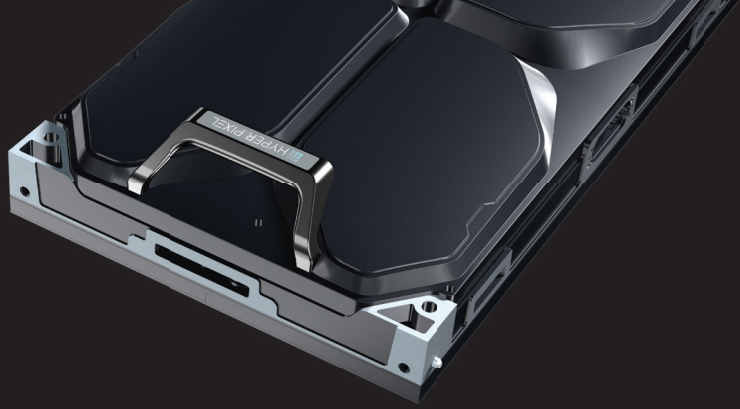


HYPER PIXEL

2.5MM

LED • Fast • Reliable • Modular • Cable Free



Hyper Pixel 2.5mm LED

The Hyper Pixel 2.5mm display features an incredible high resolution image, and a clean front and rear look with its unique cableless connections. Its industry-leading design is changing the future of LED displays.



TECHNICAL SPECIFICATIONS

Type	Hyper Pixel 2.5mm
Pixel Pitch	2.5mm
Panel Weight	18.2 lbs
Panel Power Consumption (max./ave.)	120w/40w
Brightness (adjustable)	1000 nits
Pixel Density (pixel/sqm)	160,000
Panel Resolution (w x h)	240x136
Max. Load Quantity (20A/220V)	21 panels
Panel Size	600mm x 337.5mm x 88mm / 23.62" x 13.29" x 3.66"
Module Size	200mm x 168.75mm / 7.87" x 6.64"
Maintenance Method	Front Service, Front Installation
Refresh Rate	≤ 3840Hz
Brightness/Color Calibration	Yes
Grey Level (adjustable)	16 bit
Operating Voltage	AC100~24V (50~60Hz)
Contrast Ratio	6000:1
Panel Material	Die-casting Aluminum
LED Type	SMD 3-in-1
Viewing Angle (h/v)	160° / 140°
Color Temperature (adjustable)	6500 K
Working Humidity (rh)	10 ~ 85%
Working Temperature	-20°C ~ 50°C
Blind Light Rate	1/1,000,000
Life Time (hrs)	>100,000
Color Uniformity	±0.0025 Cx,Cy
Luminance Uniformity	≥ 99%
Certification	ETL . TUV-CE. RoHS . FCC . CCC